

DHI-ASC4202B-D

Dahua Double Door two-way Access Controller



Technical Specification

System

| | |
|------------------|-----------------------|
| Main Processor | Embedded Processor |
| Network Protocol | IPv4;UDP;P2P;IPv6;TCP |
| OSDP Protocol | Yes |
| Interoperability | ONVIF PROFILE C |
| SDK | Yes |
| API | Yes |

Basic

| | |
|-----------------|------------|
| Product Type | Controller |
| Buzzer | Yes |
| Casing Material | PC+ABS |

Function

| | |
|------------------------------|--|
| Verification Method | Card;Password;Fingerprint;Remote;QR Code |
| Period List | 128 groups |
| Holiday Period | 128 groups |
| Network Update | Yes |
| First User Unlock | Yes |
| Remote Verification | Yes |
| Restricted List/Trusted List | Yes |
| Peripheral Card Reader | Supports 4-channel RS-485 card readers and 4-channel Wiegand card readers. |
| Multi-door Interlock | Yes |
| Multi-user Authentication | Yes |
| Real-time Monitoring | Yes |
| Multi-factor Authentication | Yes |
| Web Configuration | Yes |

- Adopts Linux and comes with a webpage.
- Supports 100,000 users, 100,000 passwords, 100,000 cards, 10,000 fingerprints, and 500,000 access records.
- Supports multiple unlock methods including card, password, fingerprint and QR code. You can also combine them to create your own personal unlock methods.
- You can configure scheduled unlock methods.
- Supports RS-485 card reader and Wiegand card reader.
- Offers multiple types of alarms such as duress, tamper, intrusion, unlock timeout, and excessive use of illegal card.
- Supports anti-passback, multi-door interlock, multi-person unlock, first-card unlock and remote verification.
- Supplies power to 2 locks (12 V, 1.2 A or lower) and 4 card readers (12 V, 500 mA or lower) at the same time. The power adapter must support the necessary power specifications.
- Features the fire alarm linkage. The device must be connected to the alarm input port and the corresponding linkage must be configured.
- Supports TCP/IP connection, auto registration, P2P registration and DHCP.
- PoE power supply.
- Compatible with the platforms of SmartPSS Lite, DSS Pro and DMSS.

| Unidirectional or Bidirectional | Bidirectional |
|---------------------------------|---------------|
|---------------------------------|---------------|

User

| | |
|------------------|---|
| User (Card) Type | General user, VIP user, patrol user, guest user, blocklist user, other users, custom user 1 and custom user 2 |
|------------------|---|

Capacity

| | |
|----------------------|---------|
| User Capacity | 100,000 |
| Fingerprint Capacity | 10,000 |
| Card Capacity | 100,000 |
| Record Capacity | 500,000 |

Port

| | |
|--------------|--|
| RS-485 | 5 ports. 4 for card readers, and the remaining 1 is for the extension port. |
| Wiegand | 4-channel input |
| Network Port | 1 RJ-45, 10 Mbps/100 Mbps self-adaptive |
| Alarm Input | 4 channels; expandable to 8 channels when connected to an external alarm module. |

DHI-ASC4202B-D

| | |
|-----------------------|--|
| Alarm Output | 4 channels; expandable to 8 channels when connected to an external alarm module. |
| Alarm Linkage | Yes |
| Exit Button | 2 channels |
| Door Status Detection | 2 channels |
| Lock Control | 2 channels |

Alarm

| | |
|----------------------------------|-----|
| Anti-pass Back | Yes |
| Tamper Alarm | Yes |
| Duress Alarm | Yes |
| Door Sensor Timeout | Yes |
| Intrusion | Yes |
| Illegal Card Exceeding Threshold | Yes |
| Duress Fingerprint | Yes |

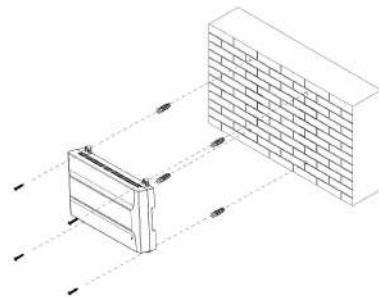
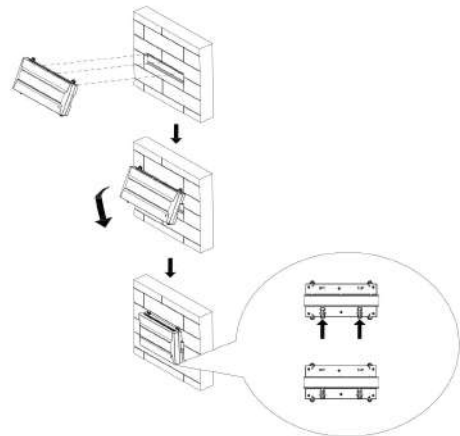
General

| | |
|-----------------------|---|
| Power Supply | Standard PoE; 12 VDC 1A (no peripheral devices) |
| Power Consumption | ≤ 3 W; it might alter if other devices are connected |
| Product Dimensions | 210.0 mm × 106.0 mm × 34.1 mm (8.27" × 4.17" × 1.34") (L × W × H) |
| Packaging Dimensions | 255 mm × 166 mm × 87 mm (10.04" × 6.54" × 3.43") (L × W × H, 1 in inner carton) 512 mm × 269 mm × 196 mm (20.16" × 10.59" × 7.72") (L × W × H, carton) |
| Operating Temperature | −30 °C to +60 °C (−22 °F to +140 °F) |
| Operating Humidity | 5%–95% (RH), non-condensing |
| Operating Environment | Indoor |
| Gross Weight | 0.54 kg (1.19 lb) |
| Installation | Surface Mount;Guide Rail Mount |

Ordering Information

| Type | Model | Description |
|-------------------|----------------|---|
| Access Controller | DHI-ASC4202B-D | Dahua Double Door two-way Access Controller |

Installation



Dimensions (mm[inch])

